

Do you or someone you love have Diabetes?

The **Future** of Diabetes Wellness



INTRODUCING

Living**Connected**

LivingConnected is the NEW Diabetes Care Program from your Insurance Plan that gives you **the Right Care, at the Right Time, and at the Right Place.**



PROGRAM BENEFITS INCLUDE:

NEW easy-to-use Cellular or Bluetooth Glucose Meter



Test Strips, Lancing Device, Lancets and other Diabetes Supplies



24 Hour monitoring and coaching when readings are out of range



Live, personalized health coaching from Certified Diabetes Educators



Online portal and smartphone application where members can access and share their results

For more
information about
enrollment call
1.800.966.2046

Once Enrolled in the LivingConnected program...

Supplies and a glucose meter will be shipped to you. (No out-of-pocket co-pays or deductibles). Refills of your supplies will only be sent once your current supply runs low.

Living**Connected**

The Future of Diabetes Wellness

Get Your FREE New Glucose Meter

Your new wireless, cellular or bluetooth-enabled Glucose Meter automatically sends your readings to your own personal diabetes website, as well as to your caregivers, family and doctor, at your request. This user-friendly smart biometric device tracks blood levels, food intake and more while providing Real-Time educational messages to your mobile phone via text or email.

Once You Get Your New Glucose Meter, the *LivingConnected* Program Provides:

24/7 Live Monitoring, Intervention & Coaching

- If necessary, you will have access to a health coach, who will work with you to keep you healthy. This includes Live and Immediate assistance upon any high or low readings or trends.

Care Team Coordination with Instant Feedback & Goal Setting

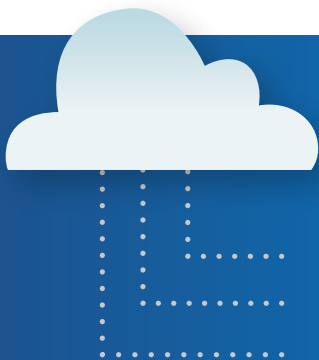
- Say Goodbye to Log Books! You can share your blood glucose readings instantly with your physician, case manager, disease management provider, health plan and family (at your discretion). This includes every result!
- Blood glucose readings are available via web portal, email, and mobile devices.

Diabetes Testing Supplies are Shipped Direct to Your Door

- Test strips, lancing device, lancets and other diabetes testing supplies are included in your Diabetes Care Program, with no out-of-pocket co-pays or deductibles.
- LivingConnected provides the *Right Care, at the Right Time, and at the Right Place*. We are an industry leader and help our customers live healthy and independently by providing quality medical supplies.

Improved Outcomes and Reduced Costs

- The LivingConnected program may lower HbA1c scores and reduce hospital visits for participants.



LivingConnected operates on a HIPAA compliant communication platform giving you access to the most comprehensive Diabetes Wellness from home, work or on the go. All the program benefits, including 2-Way Messaging, Instant Feedback, our Care Team Portal, Health Coaching and Educational Library can be accessed from anywhere!

LivingConnected. The Future of Diabetes Wellness

For more information about your enrollment, call **1.800.966.2046**.